

deltathree Inc.

**DUV-1000 Installation
Instructions**

Last Update: November 2006



DUV-1000 SET-UP INSTRUCTIONS



Step 1: Connect the DUV-1000 to your dial up internet connection

1. Connect the handset to the side of the DUV-1000 with the handset cord.
2. Connect your dial up internet connection to the DUV-1000. Plug one end of your telephone cable (RJ-11) into the LINE port at the back of the DUV-1000 and the other end into a working telephone wall jack.
3. Connect the power adaptor to an AC outlet and the power cord into the connector marked "AC" on the bottom of the DUV-1000.
4. Lift the handset and listen for the dial tone that indicates the DUV-1000 has been installed properly. If you do not hear a dial tone, check that the power adaptor is plugged into a live electrical outlet and that the power cord is pushed securely into the connector.

Step 2: How to enter alphanumeric and special characters

Lower case letters:

Press a digit key two times to enter the first character written on that key.

Press three times to enter the second character written on that key

Press four times to enter the third character written on that key.

Press five times to enter the fourth character written on that key.

For example, to enter "e" press the 3 key three times quickly. If you press the 3 key three times slowly, you will enter "333".

Capital letters:

Press the SHIFT button and then the corresponding letter following the instructions for lower case letters.

Special Characters:

@ At	Press DIAL UP 1
. Dot	Press DIAL UP 2
- Hyphen	Press DIAL UP 3
_ Underscore	Press DIAL UP 4
\$ Dollar	Press DIAL UP 5
& Ampersand	Press DIAL UP 6
/ Slash	Press DIAL UP 7
: Colon	Press DIAL UP 8

Example of how to enter "teSt_1":

Press the 8 key twice..... **t**
Press the 3 key three times **e**
Press SHIFT and then the 7 key five times **S**
Press the 8 key twice..... **t**
Press DIAL UP and then the 4 key..... **_**
Press 1..... **1**

Other useful tips:

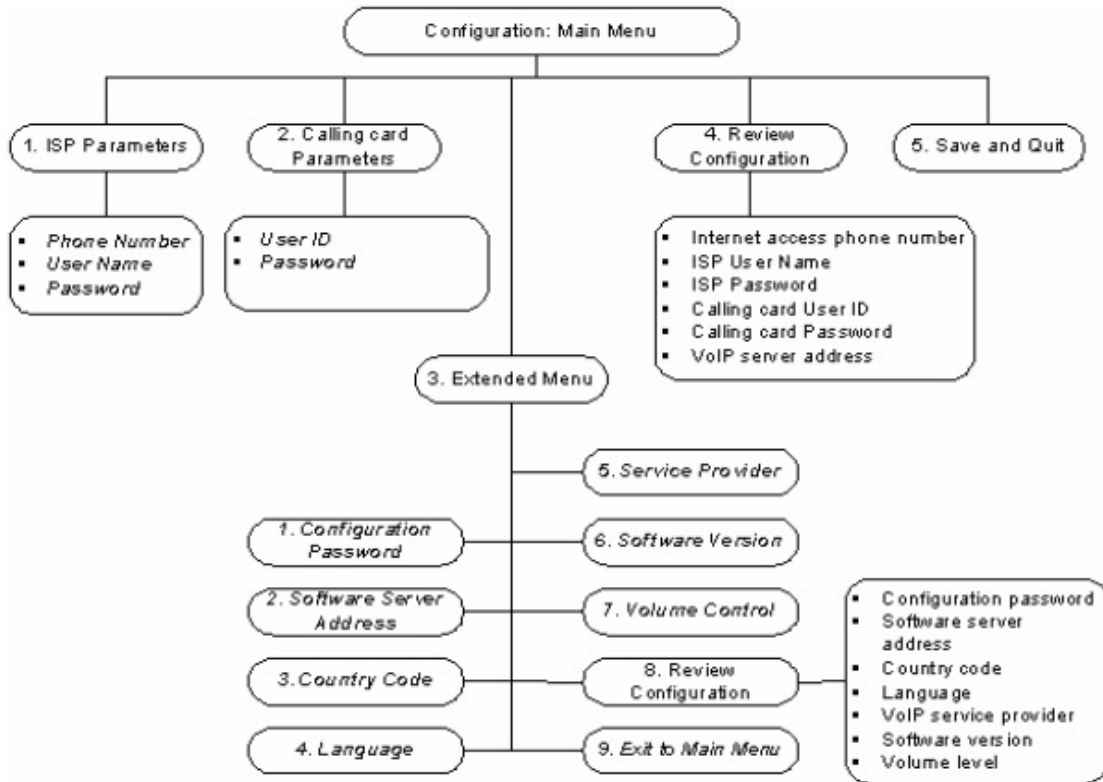
- Press DIAL UP and then 0 to backup one character.
- "2" at the end of a step lets you re-enter the field value.
- If you have to enter one number multiple times in succession - press the key once, wait a few seconds, and press the key again. For example, for the number 33, press 3, wait a few seconds, and press 3 again. If you press the 3 key twice quickly, you will enter the letter "d".

Step 3: Configure ISP (Internet Service Provider) parameters

1. Enter *123*# (enter menu)
2. Enter 12345# (menu Password)
3. Enter 1 (ISP parameters)
4. Enter 1 (edit ISP Phone)
5. Enter ISP phone followed by #
6. Enter 1 (1 to accept or 2 to re-enter)
7. Enter 1 (edit ISP username)
8. Enter ISP Username followed by #
9. Enter 1 (1 to accept or 2 to re-enter)
10. Enter 1 (edit ISP Password)
11. Enter ISP password followed by #
12. Enter 1 (1 to accept or 2 to re-enter)
13. Enter 5 (save and quit)

Step 4: Configure deltathree Calling Card parameters

1. Enter *123*# (to enter to menu)
2. Enter 12345# (Menu Password)
3. Enter 2 (Calling Card parameters)
4. Enter 1 (edit Calling Card User_ID)
5. Enter Calling Card User_ID 8 digits followed by #
6. Enter 1 (1 to accept or 2 to re-enter)
7. Enter 1 (edit Calling Card Password)
8. Enter Calling Card Password 4 digits followed by #
9. Enter 1 (1 to accept or 2 to re-enter)
10. Enter 5 (save and quit)



Step 5: Start using your DUV-1000

You are now ready to make and receive calls. Pick up the handset and press the "DIAL UP" button so that the DUV-1000 connects to the internet and then dial the telephone number. Make sure to dial country code, area code, and the number followed by # even for local phone calls: e.g. USA call 1-212-555-1212 #.

To make regular PSTN calls, pick up the handset (do not press the "DIAL UP" button) and make sure to dial country code, area code, and the number followed by # even for local phone calls: e.g. USA call 1-212-555-1212 #.